

Preparation for Assessment: Unit 2

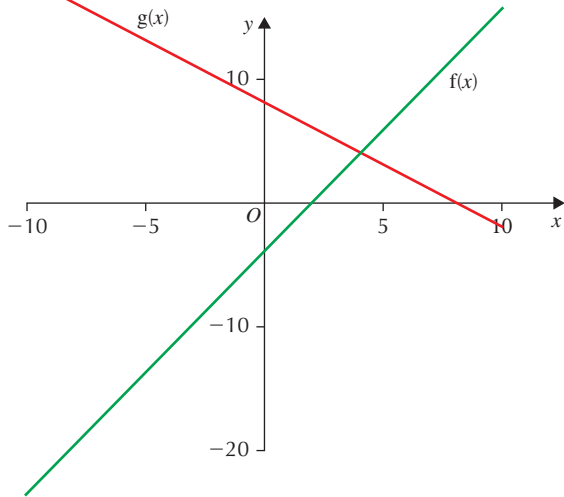
1 $m = -3, c = 4$

2 $y = 4x - 27$

3 $x = \frac{11}{3}$

4 $t \geq \frac{-15}{2}$

5 a



b $x = 4, f(x) = 4$

6 $x = \frac{-5}{2}, y = \frac{-7}{2}$

7 a children + adults = 1200,
3.25 children + 650 adults = 6630

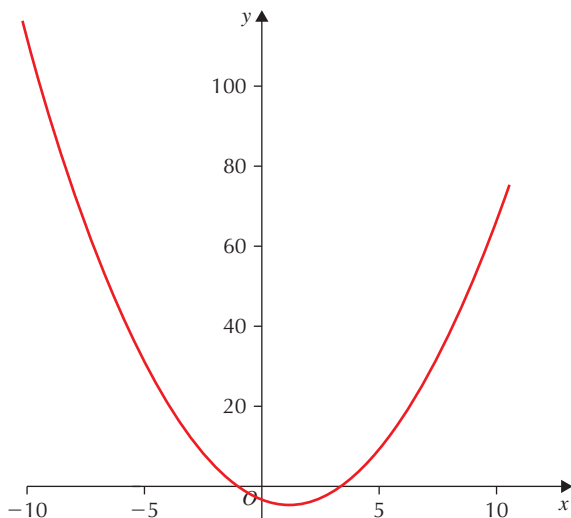
b adults = 840, children = 360

8 $a = \frac{2A}{h} - b$

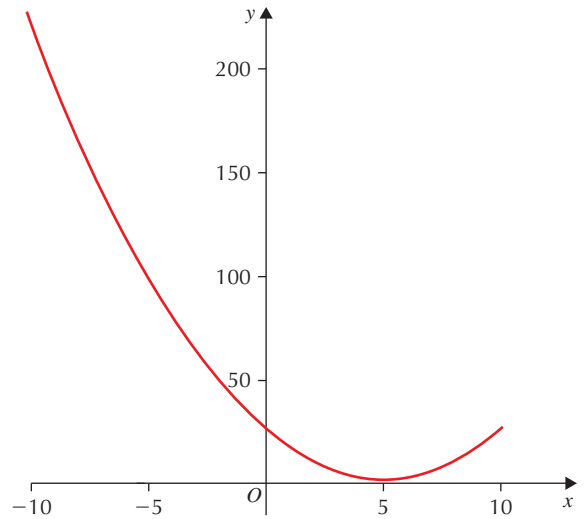
9 $2 \frac{s-ut}{t^2}$

10 $k = -2$

11 $p = 3, q = 4$



12 tp at $x = 1$ $x = 3, x = -1$



13 a tp at $x = 5$ $y = 27,$

b $x = 5$

c minimum

14 $x = 4, -6$

15 $x = -2, 5$

16 $x = 5.5, -0.5$

17 $x = 4, 5$

18 $b^2 - 4ac = 40 > 0, 2$ distinct real roots

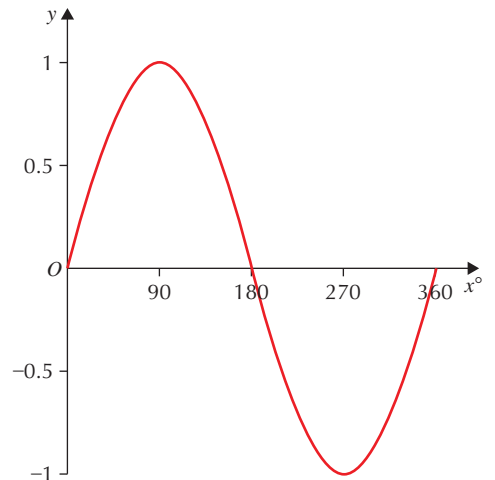
19 footprint is not a rectangle

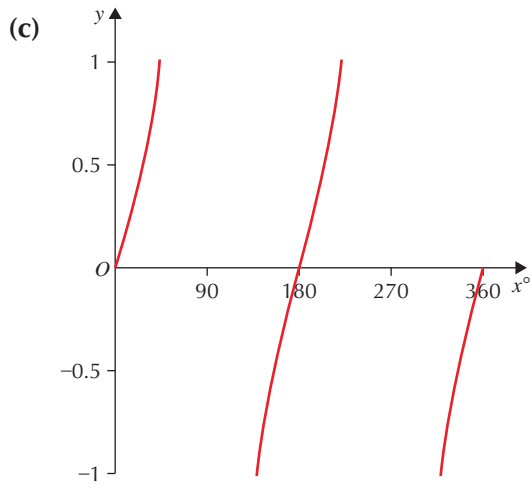
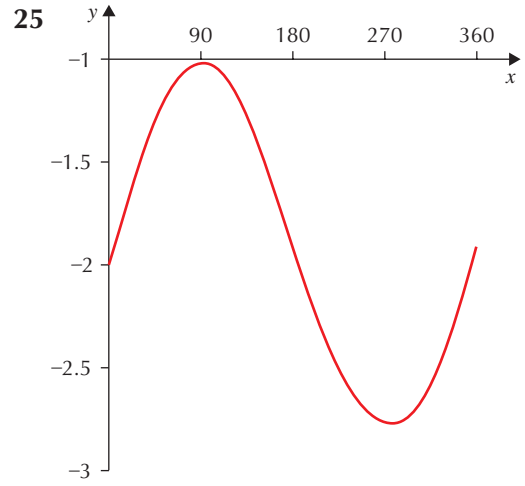
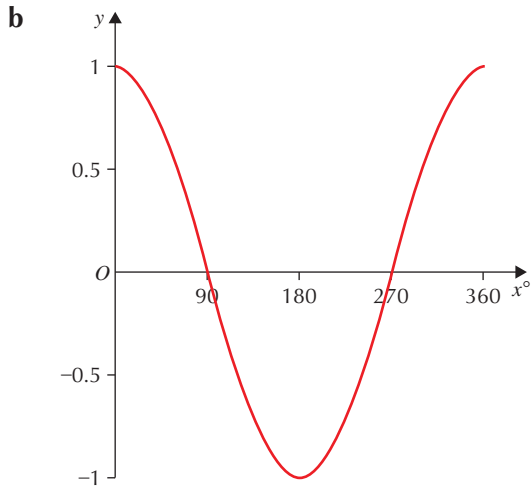
20 $a = 51.43^\circ$ $b = 64.29^\circ$

21 38°

22 198.5 ml

23 a





26 amplitude = 3, period = 90°

27 $x = 56.31^\circ$

28 $x = 221.8^\circ$

